

PRODUCT NUMBER

5 2 6 0 1 - X X X - X X X X LF

PLATING:

S=15μ[0.38μm]GOLD ON CONTACT AREA
 150μ[3.81μm]TIN/LEAD ON TAIL
 G=30μ[0.76μm]GOLD ON CONTACT AREA
 150μ[3.81μm]TIN/LEAD ON TAIL
 F=8μ[0.20μm]GOLD FLASH ON CONTACT AREA
 150μ[3.81μm]TIN/LEAD ON TAIL

LEAD FREE PLATING

S=15μ[0.38μm]GOLD ON CONTACT AREA
 100μ[2.54μm]TIN ON TAIL
 G=30μ[0.76μm]GOLD ON CONTACT AREA
 100μ[2.54μm]TIN ON TAIL
 F=8μ[0.20μm]GOLD FLASH ON CONTACT AREA
 100μ[2.54μm]TIN ON TAIL

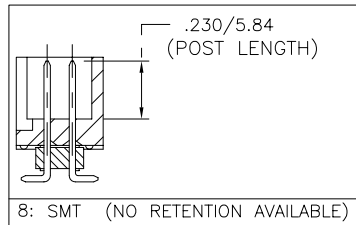
LEAD FREE OPTION
 NOTE 10,11,12

RETENTION
 R= RETENTIVE LEG
 NOTE 6

POLARIZATION
 NOTE 9

TAIL	
1	.090/2.29
2	.112/2.84
4	.120/3.05
6	.150/3.81
7	.675/17.15
8	SMT

	TOTAL POSITIONS	HDR. STYLE
10	2 x 5	B
14	2 x 7	C
16	2 x 8	D
20	2 x 10	D
26	2 x 13	D
30	2 x 15	D
34	2 x 17	D
40	2 x 20	D
44	2 x 22	D
50	2 x 25	D
60	2 x 30	D



NOTES:

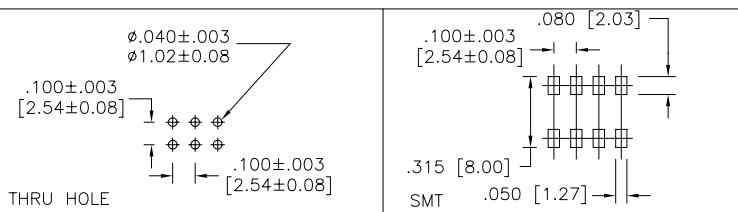
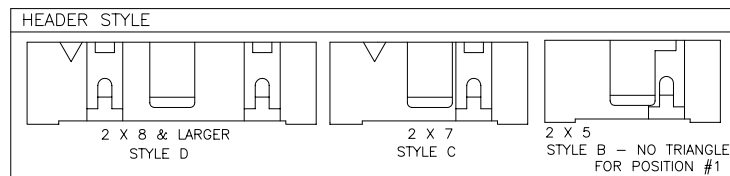
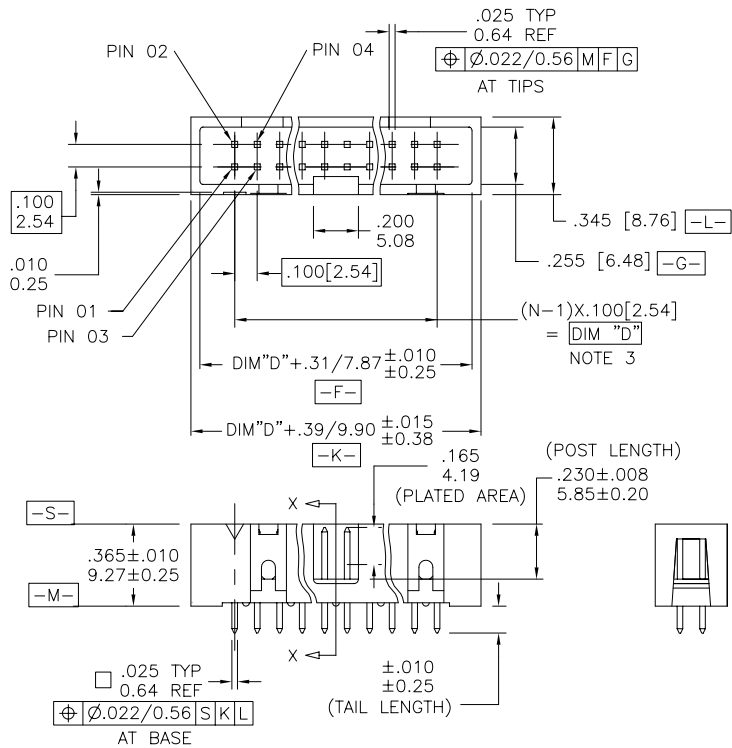
- HOUSING MAT'L: HIGH TEMPERATURE THERMOPLASTIC. UL94V-0
 COLOR: BLACK
- PIN MATERIAL: PHOSPHOR-BRONZE
- TO DETERMINE DIMENSIONS:
 N = NUMBER OF POSITIONS PER ROW
 EXAMPLE: 10 POS.,(N-1) x .100[2.54]=.900[22.86]
- 3 LBS./1.36 KG MIN. RETENTION
- PACKAGED IN TRAYS
- RETENTIVE LEG APPLICABLE TO TAIL LENGTHS .125/3.18 MAX.
 5LB/2.3KG MAX INSERTION FORCE AND .25LB./1KG MIN RETENTION FORCE
 PER RETENTIVE PIN USING .062/1.57 THICK CIRCUIT BOARD AND RECOMMENDED
 HOLE PATTERN. RETENTIVE LOCATION AT THE DISCRETION OF THE MANUFACTURER.
 RETENTION PIN MAY BE SHIFTED TO NEXT POSITION.
- OMIT FROM PRODUCT NUMBER IF THIS FEATURE IS NOT APPLICABLE.
- UNDERPLATING: 50μ"/1.27μm Ni.
- FOR POLARIZATION SPECIFY POSITION NUMBER (i.e. 03 = PIN 3) TO OMIT PIN.
 OMIT FROM PRODUCT NUMBER IF THIS FEATURE IS NOT APPLICABLE.
- ADD LF SUFFIX AT THE END OF PART NUMBER FOR LEAD FREE OPTION.
- THE HOUSING WILL WITHSTAND EXPOSURE TO 260°C PEAK TEMPERATURE
 FOR 15 SECONDS IN A WAVE SOLDER APPLICATION WITH A 1.5mm
 MINIMUM THICK CIRCUIT BOARD. SEE APPLICATION NOTES/PROCEDURES
 IF THEY ARE AVAILABLE.
- THE HOUSING WILL WITHSTAND EXPOSURE TO 260°C PEAK TEMPERATURE
 FOR 20 SECONDS IN A CONVECTION, INFRA-RED OR VAPOR PHASE
 REFLOW OVEN. SEE APPLICATION NOTES/PROCEDURES IF THEY ARE AVAILABLE.
- THIS PRODUCT MEETS EUROPEAN UNION DIRECTIVES AND OTHER
 COUNTRY REGULATION AS DESCRIBED IN GS-22-008.

mat'l. code		surface ISO 1302 ✓		tolerance ISO 406 ISO 1101		projection INCH/MM		product family QUICKIE	
ltr	ecn no dr	date		tolerances unless otherwise specified		INCH/MM		title	
F	V20410	GIP	2/27/02	angles	.XX±.01/.3	INCH/MM		.100/2.54mm LOW PROFILE	
G	V03-1203	DAI	12/22/03	linear	.XXX±.005/.13	scale 1:1		SHOROUDED VERTICAL HEADER	
H	M05-0041	MHT	3/08/05	0'±2'	.XXXX±.0020/.051			dwg no sheet 1 of 2 size	
J	M05-0042	MHT	3/09/05	dr	D. INGRAM	7/7/99		52601 A3	
K	M05-0044	MHT	3/10/05	enfr	L. GREEN	7/12/99		type Product Customer Drawing	
L	M06-0069	MHT	2/10/06	chr	L. GREEN	7/12/99			
M	M06-0289	AGS	7/29/06	appd	L. GREEN	7/21/99			
sheet index	revision	M	M						
	sheet	1	2						

FCJ
 FCconnect.com
 Copyright FCJ



FCIconnect.com



mat'l. code		surface ISO 1302 ✓	tolerance ISO 406 ISO 1101	projection 	product family QUICKIE
ltr	ecn	no	dr	date	tolerances unless otherwise specified
M					angles linear .XX±.01/.3 .XXX±.005/.13 .XXXX±.0020/.051
					0°±2'
dr	D. INGRAM	7/7/99			INCH/MM
enr	L. GREEN	7/12/99			scale 1:1
chr	L. GREEN	7/12/99			
appd	L. GREEN	7/21/99			
sheet index	revision sheet				title .100/2.54mm LOW PROFILE SHOROUDED VERTICAL HEADER
					dwg no 52601
					sheet 2 of 2 size A3
					type Product Customer Drawing

form: A3